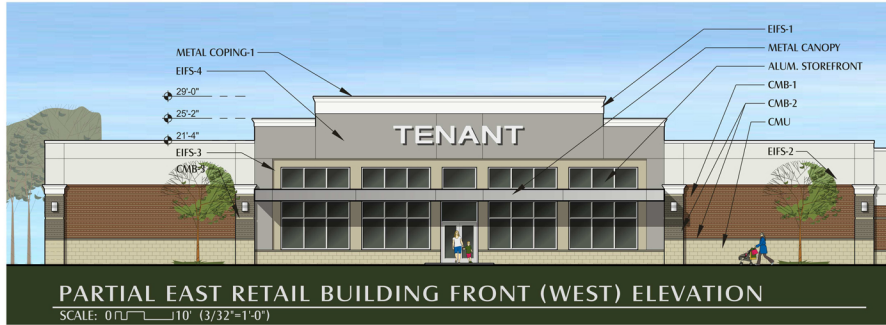




**EAST RETAIL BUILDING OVERALL FRONT (WEST) ELEVATION**

SCALE: 0" = 20' (1" = 20'-0")



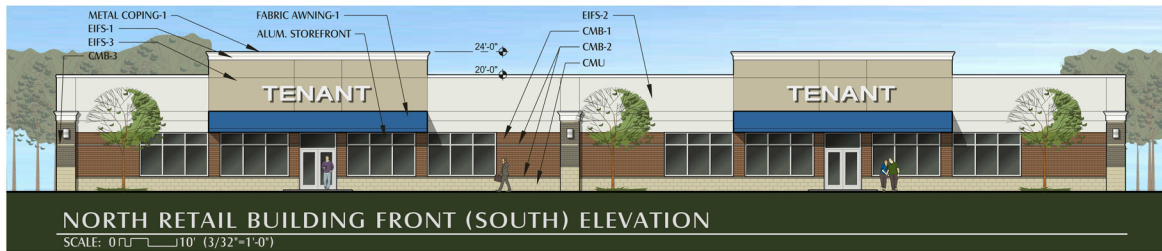
**PARTIAL EAST RETAIL BUILDING FRONT (WEST) ELEVATION**

SCALE: 0" = 10' (3/32" = 1'-0")



**PARTIAL EAST RETAIL BUILDING FRONT (WEST) ELEVATION**

SCALE: 0" = 10' (3/32" = 1'-0")



**NORTH RETAIL BUILDING FRONT (SOUTH) ELEVATION**

SCALE: 0" = 10' (3/32" = 1'-0")



**URGENT CARE/MEDICAL OFFICE BUILDING FRONT (SOUTH) ELEVATION**

SCALE: 0" = 10' (3/32" = 1'-0")

## EXTERIOR FINISH MATERIAL SPECIFICATIONS

### CONCRETE MASONRY 'BRIK' UNITS

4"H. x 16"L. INTEGRALLY COLORED ARCHITECTURAL CONCRETE MASONRY UNITS 'HARVARD BRIK' BY ECHELON, OR APPROVED EQUAL. PROVIDE CONTROL JOINTS (C.J.) @ 20'-0" O.C. MAX.  
CMB-1 - ALUSTIN  
CMB-2 - GRAY  
CMB-3 - BUTTERNUT SILK

### CONCRETE MASONRY UNITS

8"H. x 16"L. INTEGRALLY COLORED SPLIT-FACE ARCHITECTURAL CONCRETE MASONRY UNITS (C.M.U.) BY ECHELON OR APPROVED EQUAL.  
COLOR: BEIGE

### ALUMINUM STOREFRONT

2"x4-1/2" CENTER GLAZED THERMALLY-BROKEN ALUMINUM STOREFRONT SYSTEM W/ 1" INSULATED LOW-E CLEAR GLASS AS MANUFACTURED BY KAWNEER OR APPROVED EQUAL. FRAMING FINISH TO BE CLASS 1 #14 'CLEAR ANODIZED'.

### E.I.F.S.

2" EXTERIOR INSULATION & FINISH SYSTEM (E.I.F.S.) W/ INTEGRALLY COLORED/TEXTURED ELASTOMERIC FINISH & 3/4"x3/4" HORIZ. REVEAL JOINTS. DRYVIT 'OUTSULATION' COMMERCIAL SYSTEM W/ TEXTURED FINISH.  
EIFS-1 - WHITE  
EIFS-2 - BEIGE  
EIFS-3 - TALIPE  
EIFS-4 - GRAY

### FIBER CEMENT

FIBER CEMENT EXTERIOR CLADDING BY NICHIIA OR EQUAL. 'VINTAGE WOOD' SERIES. COLOR TO BE SELECTED.

### PREFINISHED METAL COPING

PREFINISHED METAL COPING W/ MINIMUM 22 GA. GALVANIZED SHEET METAL W/ KYNAR 500 COATING FINISH.  
COPING-1: WHITE  
COPING-2: BRONZE

### PREFINISHED METAL CANOPY

PREFINISHED ROUTE AND RETURN COMPOSITE METAL PANEL SYSTEM W/ KYNAR 500 METALLIC COATING FINISH.  
COLOR: GRAY

### FABRIC AWNINGS

SURFACE MOUNTED FABRIC AWNING W/ OPEN BOTTOM & SIDES ON POWDER-COATED, WELDED, TUBULAR ALUM. FRAME AS MANUFACTURED BY KIEFFER & CO. INC. OR APPROVED EQUAL.  
AWNING-1: BLUE  
AWNING-2: GRAY

### COMPOSITE COLUMN

FIBERGLASS SPLIT-CAST, NON-FLUTED, TUSCAN, TAPERED, ROUND COLUMN COVERS, 'POLY-CLASSIC' BY TURN CRAFT OR EQUAL, WITH WHITE FINISH.

### ROOF SHINGLES

30 YEAR ARCHITECTURAL FIBERGLASS BASE ASPHALT ROOF SHINGLES, 'SLATESTONE GREY' BY TAMCO BUILDING PRODUCTS OR EQUAL.